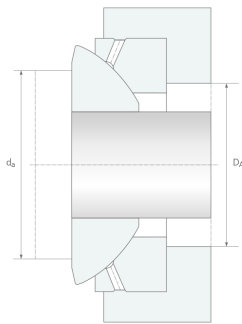
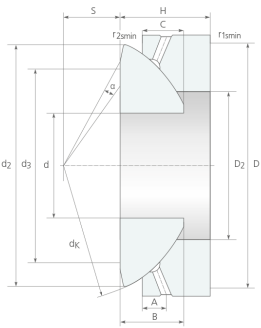


# AXIAL-GELENKLAGER DIN ISO 12240-3

Gleitpaarung: Stahl/Stahl >> wartungspflichtig GE ... AX



	d	D	B	C	H	d K	D2	d 2	d3	S	A	??	r1s min	r2s min	da max	DA min	C	C0	m
	[mm]	[mm]	[mm]	[mm]	[mm]	[mm]	[mm]	[mm]	[mm]	[mm]	[mm]	[°]	[mm]	[mm]	[mm]	[mm]	[kN]	[kN]	[kg]
GE 10 AX	10	30	7,9	6,0	9,5	32	16,5	27,5	21	7,0	3,0	10	0,6	0,2	21	18,5	24,0	120	0,036
GE 12 AX	12	35	9,3	9,0	13,0	37	19,4	32,0	24	8,0	4,0	9	0,6	0,2	24	21,5	32,5	163	0,072
GE 15 AX	15	42	10,7	11,0	15,0	45	24,0	38,9	29	10,0	5,0	7	0,6	0,2	29	26,0	52,0	260	0,108
GE 17 AX	17	47	11,5	11,5	16,0	50	28,0	43,4	34	11,0	5,0	6	0,6	0,2	34	30,5	58,5	300	0,137
GE 20 AX	20	55	14,3	13,0	20,0	60	33,5	50,0	40	12,5	6,0	6	1,0	0,3	40	38,0	75,0	375	0,246
GE 25 AX	25	62	16,0	17,0	22,5	66	34,5	57,5	45	14,0	6,0	7	1,0	0,3	45	39,0	129,0	640	0,415
GE 30 AX	30	75	18,0	19,5	26,0	80	44,0	69,0	56	17,5	8,0	6	1,0	0,3	56	49,0	170,0	850	0,614
GE 35 AX	35	90	22,0	20,0	28,0	98	52,0	84,0	66	22,0	8,0	6	1,0	0,3	66	57,0	260,0	1290	0,973
GE 40 AX	40	105	27,0	22,0	32,0	114	59,0	98,0	78	24,5	9,0	6	1,0	0,3	78	64,0	375,0	1860	1,590
GE 45 AX	45	120	31,0	25,0	36,5	130	68,0	112,0	89	27,5	11,0	6	1,0	0,3	89	74,0	490,0	2450	2,240
GE 50 AX	50	130	33,5	32,0	42,5	140	69,0	122,5	98	30,0	10,0	5	1,0	0,3	98	75,0	655,0	3250	3,140
GE 60 AX	60	150	37,0	33,0	45,0	160	86,0	140,0	108	35,0	12,5	7	1,0	0,3	108	92,0	735,0	3650	4,630
GE 70 AX	70	160	40,0	36,0	50,0	170	95,0	149,5	121	35,0	13,5	6	1,0	0,3	121	102,0	800,0	4050	5,370
GE 80 AX	80	180	42,0	36,0	50,0	194	108,0	168,0	130	42,5	14,5	6	1,0	0,3	130	115,0	1040,0	5200	6,910
GE 100 AX	100	210	50,0	42,0	59,0	220	133,0	195,5	155	45,0	15,0	7	1,0	0,3	155	141,0	1200,0	6000	10,900
GE 120 AX	120	230	52,0	45,0	64,0	245	154,0	214,0	170	52,5	16,5	8	1,0	0,3	170	162,0	1250,0	6200	13,900
GE 140 AX	140	260	61,0	50,0	72,0	272	176,0	244,0	198	52,5	23,0	6	1,5	0,6	198	187,0	1630,0	8150	18,100
GE 160 AX	160	290	65,0	52,0	77,0	310	199,0	272,0	213	65,0	23,0	7	1,5	0,6	213	211,0	1900,0	9500	23,200
GE 180 AX	180	320	70,0	60,0	86,0	335	224,0	300,0	240	67,5	26,0	8	1,5	0,6	240	236,0	2120,0	10600	30,900



GE 200 AX	200	340	74,0	60,0	87,0	358	246,0	321,0	265	70,0	27,0	8	1,5	0,6	265	259,0	2360,0	11800	34,200
-----------	-----	-----	------	------	------	-----	-------	-------	-----	------	------	---	-----	-----	-----	-------	--------	-------	--------